

**PLAN** **FLOOR 48-56**  
**3A** **3 BED**  
**2.5 BATH**  
**1,734 SQ. FT.**

**RESIDENCE FEATURES**

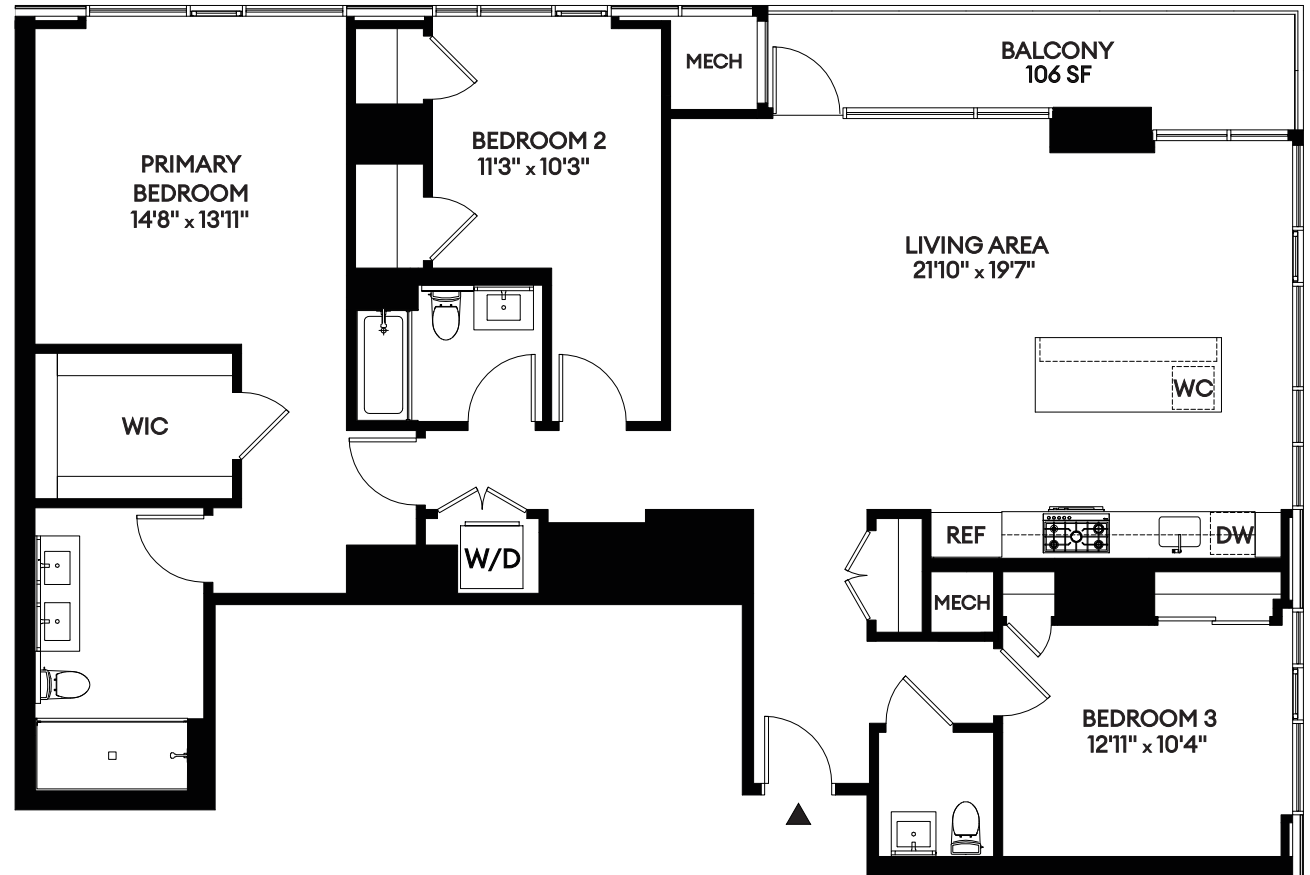
- Premium unit layouts with higher ceiling heights
- Natural marble countertops in kitchens + baths
- Panelized Fisher Paykel refrigerator + double dishdrawer, built-in stainless steel wall oven, gas cooktop, microwave drawer + wine cooler\*
- Luxe bath with basalt flooring, polished chrome finishes, LED custom vanity + soaking tub or glass shower enclosures\*
- Samsung full-size washer + dryer
- Floor-to-ceiling, double-paned glass windows with unobstructed views throughout
- Private spacious balcony\*
- Latch® keyless entry system
- Nest® programmable thermostat

**AMENITIES**

- Hospitality-style arrival + lobby
- 24/7/365 concierge + security
- Resort-like pool + spa with reservable cabanas
- Athletic club with premier equipment, technology + private studios
- Co-working space with conference rooms + pods
- Vast indoor/outdoor amenities with entertaining spaces, grilling stations + dining areas on Level 3
- Bocce ball court, putting green, golf simulator, poker game room, pet spa + dog run
- Dedicated social lounge on Level 35 with catering kitchen + pool table
- Expansive rooftop lounge with grand piano, catering kitchen + outdoor terrace on Level 57
- Beaudry resident app designed for a seamless living experience

\* Select residences

Floor plan dimensions are approximate and may vary based upon location in the building. All information provided herein is for informational purposes only and shall not be construed as or deemed to constitute a representation or warranty. Additional charges may apply to building services, benefits, and amenities.



BeaudryDTLA.com

960 W. 7th Street  
Los Angeles, CA 90017

**Brookfield**  
Properties

